

# Energy Meters

Ambition, PRO & N series



## inepro Metering

Since 1992 inepro has been a manufacturer of high-quality energy meters that are distributed under the brand name **inepro** Metering.

With an extensive range of top quality certified (MID, MIR and Metas) energy meters, **inepro** Metering is one of the fastest growing metering manufacturers in the market today. Premium solutions, a strong business focus, expertise and very competitive pricing makes **inepro** Metering stand out from its competition.

**inepro** Metering is part of the **inepro** Group, which develops and manufactures solutions to help its customers increase efficiency to be able to fully focus on fulfilling their ambitions.



### inepro cares about the future

**inepro's** headquarters was built with a focus on the environment and utilized eco-friendly techniques and green innovations such as geothermal energy and concrete core activation to save up to 40% on energy costs. This has resulted in a carbon-neutral building. **inepro** also made the transition to electric cars for their operations.

# Ambition series



| Article number | Metas | MID | MIR | Phase | Mod. | Cur. | Com.          | App       | Display | Conn.       | Con. mode | S0 | Back-light | Tariff | S0 Pulse   |
|----------------|-------|-----|-----|-------|------|------|---------------|-----------|---------|-------------|-----------|----|------------|--------|------------|
| 0320 4PU       | Yes   | Yes | Yes | 3     | 4    | 65A  | Modbus+ M-bus | Yes (BLE) | Graphic | WAGO Clamps | Direct    | 2  | Yes        | 4      | Selectable |
| 0321 4PS       | Yes   | Yes | Yes | 3     | 4    | 65A  | Modbus+ M-bus | Yes (BLE) | Graptic | WAGO Clamps | Direct    | 2  | Yes        | 4      | Selectable |
| 0322 2PU CT    | No    | Yes | Yes | 3     | 2    | 5A   | Modbus+ M-bus | Yes (BLE) | Graphic | WAGO Clamps | Indirect  | 2  | Yes        | 4      | Selectable |

## The next generation

**inepro's** Ambition series sets the new standard for next-generation meters, focusing on seamless installation and easy maintenance. The innovative integration of the WAGO Push-in CAGE CLAMP® allows you to install these meters without tools, making the process faster and easier than ever before. Thanks to the Bluetooth® interface that can be connected to a mobile application, programming and configuration are both fast and effortless.

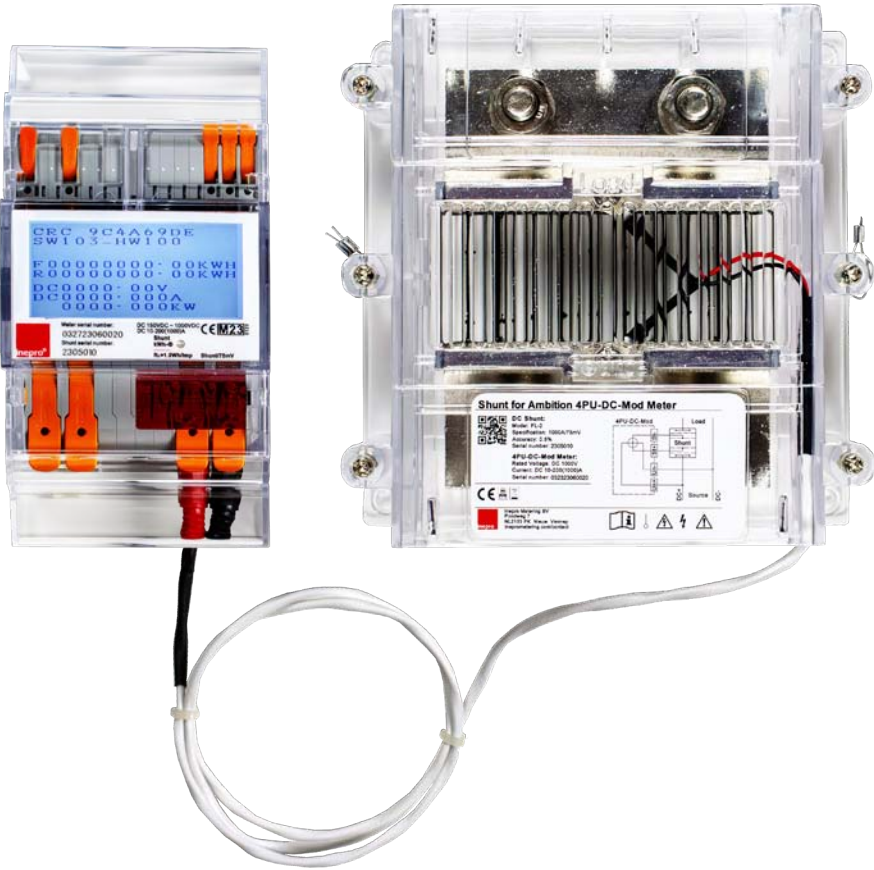
The **inepro** Metering Manager allows you to remotely monitor values per phase or total via your smartphone or tablet (available via the App Store & Google Play). The meters can collect data via M-bus, Modbus, S0 interface and UART port (TCP-IP) for efficient metering.

With high accuracy for active energy measurement and a wide temperature range, Ambition meters display immediate variables on the LCD and can be accessed through various communication options. In addition, the Ambition series meets multiple guidelines and certifications for different regions.

In addition to its distinctive transparent housing, large dot-matrix displays, and a customizable user interface, **inepro's** Ambition meters are remarkably efficient. Rely on **inepro's** advanced and reliable technology to provide you with a reliable metering solution that stands out from the rest.



# Ambition 4PU-DC-Mod & Shunt



## Empowering Sustainable Energy

Responding to the increasing demand for renewable energy solutions, **inepro** Metering is proud to present the Ambition 4PU-DC-Mod Meter, carefully designed for measuring direct current (DC). Unlike conventional meters made for alternating current, the Ambition 4PU-DC-Mod Meter ensures accuracy of measurements for various applications such as data centres, telecommunications and medical equipment. The Ambition 4PU-DC-Mod Meter is one of the first MID-certified DC meters on the market, making it ideal for official billing procedures.

The Ambition 4PU-DC-Mod meter stands out with its powerful features and benefits tailored for modern energy needs. It offers a voltage range of up to 1000 Volts. Its integration of the shunt and DC meter into one certified device simplifies the certification process, saving both time and costs for manufacturers. Additionally, the built-in 230 Volt power supply eliminates the necessity for a separate power unit. With a user-friendly, tool-free installation process featuring WAGO Push-in CAGE CLAMPS®, the Ambition 4PU-DC-Mod meter redefines efficiency and reliability in electricity metering.

| Article number  | Metas | MID | MIR | Phase | Mod. | Cur.  | Com.   | App | Display | Conn.       | Con. mode | S0 | Back-light | Dimensions (l x w x h) |
|-----------------|-------|-----|-----|-------|------|-------|--------|-----|---------|-------------|-----------|----|------------|------------------------|
| 0343 4PU-DC-Mod | No    | Yes | No  | 1     | 4    | 300A  | Modbus | No  | Graphic | WAGO Clamps | Direct    | No | Yes        | 7.9x15.2x5.85 cm       |
| 0344 4PU-DC-Mod | No    | Yes | No  | 1     | 4    | 600A  | Modbus | No  | Graphic | WAGO Clamps | Direct    | No | Yes        | 10.9x15.2x5.85 cm      |
| 0327 4PU-DC-Mod | No    | Yes | No  | 1     | 4    | 1000A | Modbus | No  | Graphic | WAGO Clamps | Direct    | No | Yes        | 14.9x15.2x5.85 cm      |
| 0345 4PU-DC-Mod | No    | Yes | No  | 1     | 4    | 1500A | Modbus | No  | Graphic | WAGO Clamps | Direct    | No | Yes        | 18.5x15.2x5.85 cm      |

# Ambition Modbus TCP Gateway

TCP/IP, short for Transmission Control Protocol/Internet Protocol, enables the seamless transfer of data over networks, including the Internet. With our new module, your Modbus meter can now communicate in real time with a central server or web application, providing valuable insights into your energy consumption.

The Modbus TCP Gateway can be linked directly, without external cables, to any meter from our Ambition series. The module can also be connected to Modbus meters, with a baud rate range from 1200 to 115200.

A mounting cover is supplied together with our Modbus TCP Gateway so you can effortlessly connect it to your Ambition meter.

| Article number          | Max COM-port | Mod. | Input cur. | Com.                                 | Conn.       | IP             |
|-------------------------|--------------|------|------------|--------------------------------------|-------------|----------------|
| 0330 Modbus TCP Gateway | 4            | 1    | 500 mA     | Modbus RS485+<br>Modbus RS232 (UART) | WAGO Clamps | DHCP or static |

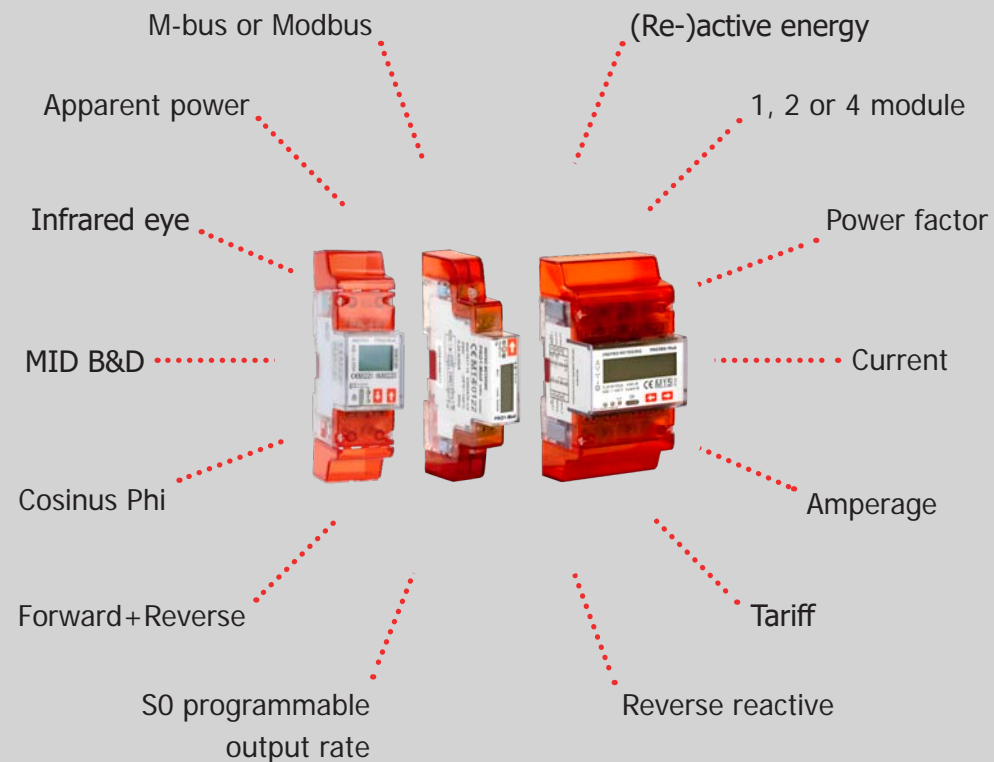


# PRO series

The PRO line energy meters have been established in 2013. With this line, **inepro** delivers high-quality energy meters for the top segment of the metering market. The meters are MID-approved, so these can be used for invoicing purposes. The 14 models of single and three phase energy meters are equipped with optional, 2 tariff, Modbus or M-bus communication.

The PRO series has a fresh and transparent Dutch design. The distinct red covers signify our passion to develop the best metering solutions. The newly developed meters show more than 30/60 variables (depending on the meter) in the LCD. The meters can be easily read out via an infrared eye and S0-output. Optional M-bus and Modbus are available.

**inepro** spent numerous years developing these premium quality smart energy meters with the highest functionality while maintaining the best price-quality ratio.



# PRO1 - MID B&D

The PRO1 series is a range of 1 module, single phase energy meters consisting of 4 different types, each with their specific characteristics.

The meters have an exceptional combination of a high accuracy class (1/B) and a broad temperature range of -40°C to +70°C. Another unique feature is the I<sub>max</sub> of 45A.

The PRO1 series is available as a standard version (with a selectable S0 output) and as a Modbus, M-bus or 2 tariff version. It can communicate and be programmed via an infrared input. The different communication modes have over 40 variables such as kWh, active and reactive energy, forward and reverse energy as well as Cos phi.

The PRO1 series is equipped with a resettable day counter and the total energy usage can be calculated via 6 different modes.

| Article number | MID | MIR | Phase | Mod. | Cur. | Com.   | Display | Digits | Con. mode | S0 | Back-light | Acc. Class | Tariff | S0 pulse output         |
|----------------|-----|-----|-------|------|------|--------|---------|--------|-----------|----|------------|------------|--------|-------------------------|
| 0251 PRO1-S    | Yes | Yes | 1     | 1    | 45A  | x      | LCD     | 4+2    | direct    | 1  | Yes        | B          | x      | Selectable <sup>1</sup> |
| 0252 PRO1-2T   | Yes | Yes | 1     | 1    | 45A  | x      | LCD     | 4+2    | direct    | 1  | Yes        | B          | 2      | Selectable <sup>1</sup> |
| 0253 PRO1-Mb   | Yes | Yes | 1     | 1    | 45A  | M-bus  | LCD     | 4+2    | direct    | 1  | Yes        | B          | 2      | Selectable <sup>1</sup> |
| 0254 PRO1-Mod  | Yes | Yes | 1     | 1    | 45A  | Modbus | LCD     | 4+2    | direct    | 1  | Yes        | B          | 2      | Selectable <sup>1</sup> |

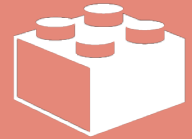
<sup>1</sup> selectable options: 10.000-2.000-1.000-100-10-1-0.1-0.01



## Phase, Module & Current



1



1



45A

# PRO2 - MID B&D

The PRO2 series is a range of 2 module, single phase energy meters consisting of 4 different types, each with their specific characteristics.

The meters have an exceptional combination of a high accuracy class (1/B) and a broad temperature range of -40°C to +70°C. Another unique feature is the I<sub>max</sub> of 100 A.

The PRO2 series is available as a standard version (with a selectable S0 output) and as a Modbus, M-bus or 2 tariff version. It can communicate and be programmed via an infrared input. The different communication modes have over 40 variables such as kWh, active and reactive energy, forward and reverse energy as well as Cos phi. inepro has also integrated OBIS codes in the PRO2.

The PRO2 series is equipped with a resettable day counter and the total energy usage can be calculated via 6 different modes.

| Article number | MID | MIR | Phase | Mod. | Cur. | Com.   | Display | Digits | Con. mode | S0 | Back-light | Acc. Class | Tariff | S0 pulse output         |
|----------------|-----|-----|-------|------|------|--------|---------|--------|-----------|----|------------|------------|--------|-------------------------|
| 0284 PRO2-S    | Yes | Yes | 1     | 2    | 100A | x      | LCD     | 5+2    | direct    | 2  | Yes        | B          | x      | Selectable <sup>1</sup> |
| 0285 PRO2-2T   | Yes | Yes | 1     | 2    | 100A | x      | LCD     | 5+2    | direct    | 2  | Yes        | B          | 2      | Selectable <sup>1</sup> |
| 0286 PRO2-Mb   | Yes | Yes | 1     | 2    | 100A | M-bus  | LCD     | 5+2    | direct    | 2  | Yes        | B          | 2      | Selectable <sup>1</sup> |
| 0287 PRO2-Mod  | Yes | Yes | 1     | 2    | 100A | Modbus | LCD     | 5+2    | direct    | 2  | Yes        | B          | 2      | Selectable <sup>1</sup> |

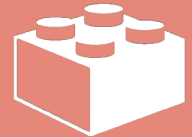
<sup>1</sup> selectable options: 10.000-2.000-1.000-100-10-1-0-1-0-01



## Phase, Module & Current



1



2



100A



# PRO380 - MID B&D

The PRO380 series is a range of 4 module, three phase energy meters consisting of 3 different types each with their specific characteristics.

The meters have an exceptional combination of a high accuracy class (1/B) and a broad temperature range of -40°C to +70°C.

The PRO380 series is available as a standard version (with a selectable S0 output) and as a Modbus or M-bus version. It can communicate and be programmed via an infrared input. The different communication modes have over 60 variables such as kWh, active and reactive energy, forward and reverse energy as well as Cos phi.

The PRO380 series is equipped with a resettable day counter and the total energy usage can be calculated via 7 different modes.

| Article number  | MID | MIR | Phase | Mod. | Cur. | Com.    | Display | Digits | Con. mode | S0 | Back-light | Acc. Class | Tariff | S0 pulse output         |
|-----------------|-----|-----|-------|------|------|---------|---------|--------|-----------|----|------------|------------|--------|-------------------------|
| 0255 PRO380-S   | Yes | Yes | 3     | 4    | 100A | x       | LCD     | 6+2    | direct    | 2  | yes        | B          | 2      | Selectable <sup>1</sup> |
| 0256 PRO380-Mb  | Yes | Yes | 3     | 4    | 100A | M-bus   | LCD     | 6+2    | direct    | 2  | yes        | B          | 2      | Selectable <sup>1</sup> |
| 0257 PRO380-Mod | Yes | Yes | 3     | 4    | 100A | Mod-bus | LCD     | 6+2    | direct    | 2  | yes        | B          | 2      | Selectable <sup>1</sup> |

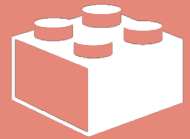
<sup>1</sup> selectable options: 10.000-2.000-1.000-100-10-1-0.1-0-0.01



## Phase, Module & Current



3



4



100A

# PRO380 - MID CT B&D

The PRO380 CT series is a range of 4 module, three phase CT energy meters consisting of 3 different types each with their specific characteristics.

The meters have an exceptional combination of a high accuracy class (1/B & 0,5/C) and a broad temperature range of -25°C to +70°C.

The PRO380 CT series is available as a standard version (with a selectable SO output) and as a Modbus or M-bus version. It can communicate and be programmed via an infrared input. The different communication modes have over 60 variables such as kWh, active and reactive energy, forward and reverse energy as well as Cos phi.

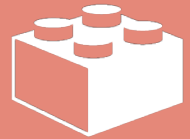
The PRO380 CT is equipped with a resettable day counter and the total energy usage can be calculated via 7 different modes. You can program the CT ratio at your convenience.



## Phase, Module & Current



3



4



/6A (CT)

| Article number  | MID | MIR | Phase | Mod. | Cur. | Com.   | Display | Digits            | Con. mode | SO | Back-light | Acc. Class | Tariff | SO pulse output         |
|-----------------|-----|-----|-------|------|------|--------|---------|-------------------|-----------|----|------------|------------|--------|-------------------------|
| 0258 PRO380-S   | Yes | Yes | 3     | 4    | /6A  | x      | LCD     | Var. <sup>2</sup> | CT        | 2  | yes        | B          | 2      | Selectable <sup>1</sup> |
| 0259 PRO380-Mb  | Yes | Yes | 3     | 4    | /6A  | M-bus  | LCD     | Var. <sup>2</sup> | CT        | 2  | yes        | B          | 2      | Selectable <sup>1</sup> |
| 0260 PRO380-Mod | Yes | Yes | 3     | 4    | /6A  | Modbus | LCD     | Var. <sup>2</sup> | CT        | 2  | yes        | B          | 2      | Selectable <sup>1</sup> |

<sup>1</sup> selectable options: 10.000-2.000-1.000-100-10-1-0.1-0.01

<sup>2</sup> variable; depending on the CT-ratio: 5+3 / 6+2 / 7+1 / 8+0

# PRO380-Compact

The PRO380-Compact is a three phase wall-mounted energy meter with its specific characteristics.

As we embrace the 'smart city', the need for compact metering solutions in space-conscious urban settings is on the rise. Our response? The PRO380-Compact. At a mere 12x6.5x2.1cm, it is the smallest MID-approved three phase meter, designed to effortlessly integrate into charging stations, lampposts, and much more.

The meter has an exceptional combination of a high accuracy class (B) and a broad temperature range of -40°C to +70°C.

The PRO380-Compact comes standard with Modbus communication. The meter has a baud rate range of 300 to 9600 and 3 parity settings (Even, none and odd).

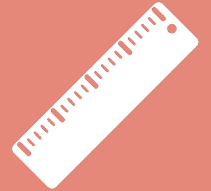
| Article number      | MID | MIR | Phase | Cur. | Com.   | Display | Digits            | Con. mode | Back-light | Acc. Class | Tariff |
|---------------------|-----|-----|-------|------|--------|---------|-------------------|-----------|------------|------------|--------|
| 0318 PRO380-Compact | Yes | No  | 3     | 45A  | Modbus | LCD     | Var. <sup>2</sup> | Direct    | Yes        | B          | 3      |



## Phase, Module & Current



3



21mm



45A

# PRO-Flex

The PRO-flex is a practical and simple solution that allows you to measure the energy consumption of mobile energy users/appliances.

The PRO-flex can easily be carried to different locations, so there is no need to build a complete and costly infrastructure per location.

## Highlights

- unique design
- inepro MID-approved meter inside
- suitable for billing purposes
- IP 44 (cable) 54 (casing)
- 1,5mm<sup>2</sup> or 2,5mm<sup>2</sup> H07RN-F cable
- Schuko or CEE16 plug
- cable length 2 x 50cm
- max 16A

| Article number | MID | MIR | Phase | Cur. | Com. | Display | Con. mode | Back-light | Acc. Class | Plug   | Cable                     |
|----------------|-----|-----|-------|------|------|---------|-----------|------------|------------|--------|---------------------------|
| 0276           | Yes | Yes | 3     | 16A  | x    | LCD     | Direct    | Yes        | B          | Schuko | 2,5mm <sup>2</sup> H07RNF |
| 0283           | Yes | Yes | 3     | 16A  | x    | LCD     | Direct    | Yes        | B          | CEE16  | 2,5mm <sup>2</sup> H07RNF |



## Phase & Current



1 or 3



16A



# PRO CT - Split Core

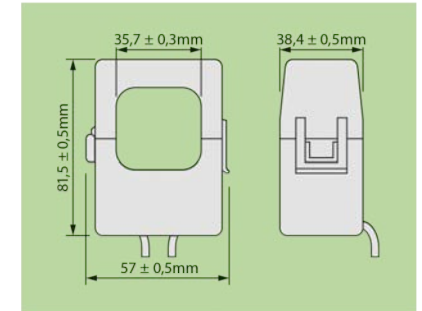
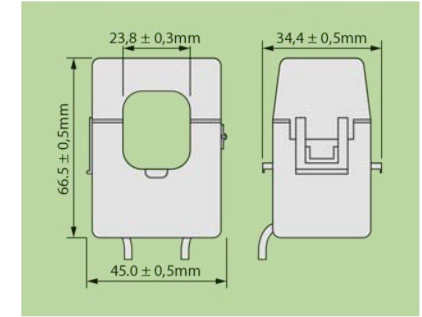
The PRO CT series offers a range of split core current transformers designed for installation into existing plants where the removal of busbars/cable lugs prevents installation of standard current transformers.

## PRO24

- Primary current: 100 to 300A
- 24mm cable aperture
- Integral 1m cable
- Snap together housing

## PRO36

- Primary current: 250 to 600A
- 36mm cable aperture
- Integral 1m cable
- Snap together housing



| Article number      | Ratio | Cable aperture | Class | Burden |
|---------------------|-------|----------------|-------|--------|
| 7010 PRO24-CT5-100c | 100/5 | 24mm           | 3     | 1VA    |
| 7019 PRO24-CT5-150c | 150/5 | 24mm           | 3     | 1VA    |
| 7012 PRO24-CT5-200c | 200/5 | 24mm           | 1     | 1.5VA  |
| 7013 PRO24-CT5-250c | 250/5 | 24mm           | 1     | 1.5VA  |
| 7014 PRO24-CT5-300c | 300/5 | 24mm           | 1     | 1.5VA  |
| 7015 PRO36-CT5-250c | 250/5 | 36mm           | 1     | 1.5VA  |
| 7017 PRO36-CT5-400c | 400/5 | 36mm           | 0.5   | 1.5VA  |
| 7018 PRO36-CT5-600c | 600/5 | 36mm           | 0.5   | 1.5VA  |

# PRO CT - Solid Core

The PRO CT series offers a range of solid core current transformers. The inepro solid core current transformers are perfectly suitable for installation in combination with a PRO380 CT smart energy meter.

## PRO3010

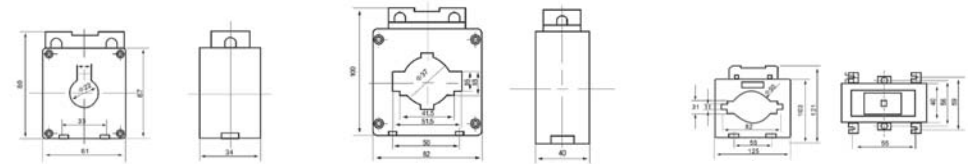
- Primary current: 100 to 300A
- 23mm cable aperture

## PRO5010

- Primary current: 400 to 600A
- 37mm cable aperture

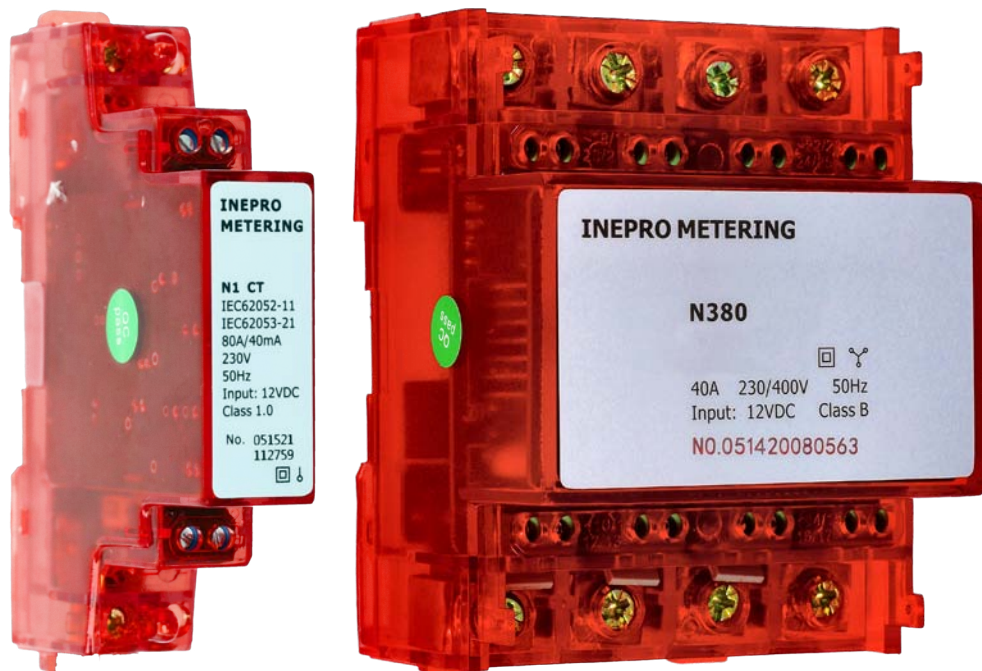
## PRO8010

- Primary current: 600 to 1500A
- 50mm cable aperture



| Article number        | Ratio  | Cable aperture | Class | Burden |
|-----------------------|--------|----------------|-------|--------|
| 7108 PRO3010-CT5-100  | 100/5  | 23mm           | 0.5   | 2.5VA  |
| 7101 PRO3010-CT5-150  | 150/5  | 23mm           | 0.5   | 5VA    |
| 7102 PRO3010-CT5-200  | 200/5  | 23mm           | 0.5   | 5VA    |
| 7103 PRO3010-CT5-250  | 250/5  | 23mm           | 0.5   | 5VA    |
| 7110 PRO3010-CT5-300  | 300/5  | 23mm           | 0.5   | 5VA    |
| 7112 PRO5010-CT5-400  | 400/5  | 37mm           | 0.5   | 5VA    |
| 7113 PRO5010-CT5-500  | 500/5  | 37mm           | 0.5   | 5VA    |
| 7114 PRO5010-CT5-600  | 600/5  | 37mm           | 0.5   | 5VA    |
| 7115 PRO8010-CT5-1000 | 1000/5 | 50mm           | 0.5   | 10VA   |

# N series



| Article number | MID | MIR | Phase | Mod. | Cur.              | Com.   | Con. mode | Required power supply |
|----------------|-----|-----|-------|------|-------------------|--------|-----------|-----------------------|
| 0513 N1        | No  | No  | 1     | 1    | 40A               | Modbus | Screws    | 12VDC                 |
| 0514 N380      | No  | No  | 3     | 4    | 40A               | Modbus | Screws    | 12VDC                 |
| 0515 N1 CT     | No  | No  | 1     | 1    | 100A <sup>1</sup> | Modbus | Screws    | 12VDC                 |
| 0516 N380 CT   | No  | No  | 3     | 4    | 100A <sup>1</sup> | Modbus | Screws    | 12VDC                 |

<sup>1</sup> Options available: 80A and 100A

## Optimise your power distribution

The **inepro** Metering N series has been developed with a focus on load balancing in the context of EV charging. This could be a home, a company building or even a charging hub in the city. The N meter is an important tool used in energy management systems to optimise power distribution and reduce costs. It allows users to monitor and manage power consumption at different points in a building or facility, ensuring that energy is distributed evenly and efficiently.

### N1

The N1 meter is a single phase meter, suitable for load balancing in residential and small commercial environments. It offers a compact and easy-to-use design in which the already connected CT clamps can be clipped over the cables. The Modbus register map is very similar to the PRO series. An extra (external) 12V power supply is required for the proper functioning of this load-balancing hardware.

### N380

The N380 meter is a three phase meter designed for load balancing in industrial and commercial environments. It features a compact and user-friendly design that allows for easy installation, as the CT clamps can be clipped over the cables. Its Modbus register map is similar to that of the PRO series. To ensure the proper functioning of this load-balancing hardware, an external 12V power supply is required.

# IR Eye Adapter



The IR Eye adapter enables seamless data reading and remote configuration for our electricity meters. Infrared (IR) communication technology allows users to effortlessly retrieve consumption data and exchange settings. Simply place the reading head of the IR Eye adapter over the meter's infrared diode to capture relevant information and configure settings remotely using a laptop or other mobile device.

Whether you are a home user looking to monitor consumption or a professional in the field looking for efficient configuration solutions, the IR Eye adapter meets all your needs.







**inepro** Metering  
Pondweg 7  
2153 PK Nieuw Vennep  
The Netherlands

T +31 (0) 252 744044

[sales@ineprometering.com](mailto:sales@ineprometering.com)  
[www.ineprometering.com](http://www.ineprometering.com)

